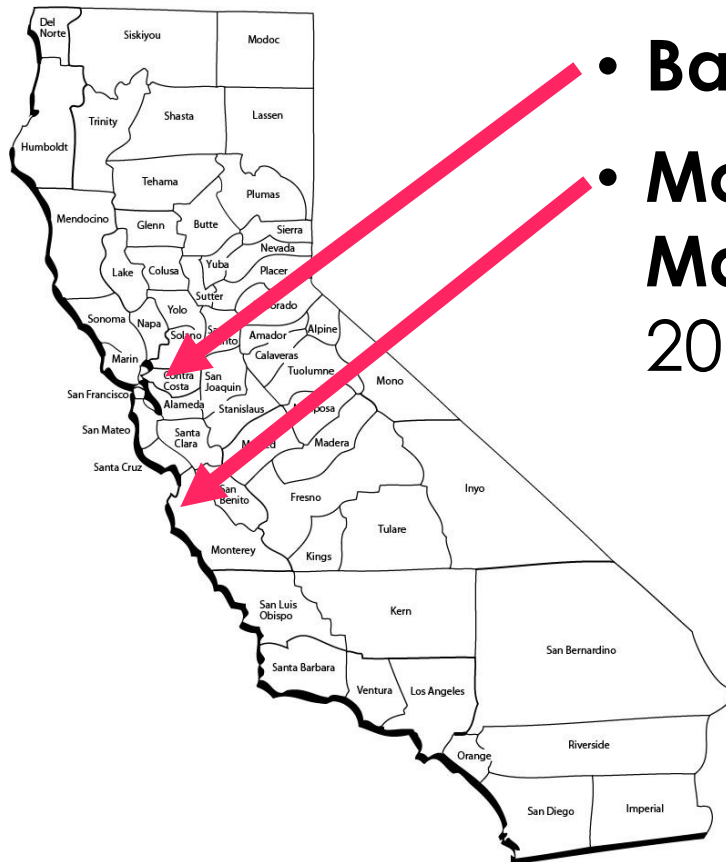


Contamination in Recyclables

SWANA Western Regional Symposium
April 7, 2022

SCS ENGINEERS

Recycling Characterization



- **Bay Area City** in 2020
- **Monterey Regional Waste Management District** in 2018, 2019, 2020, & 2021

Bay Area City Study - Design

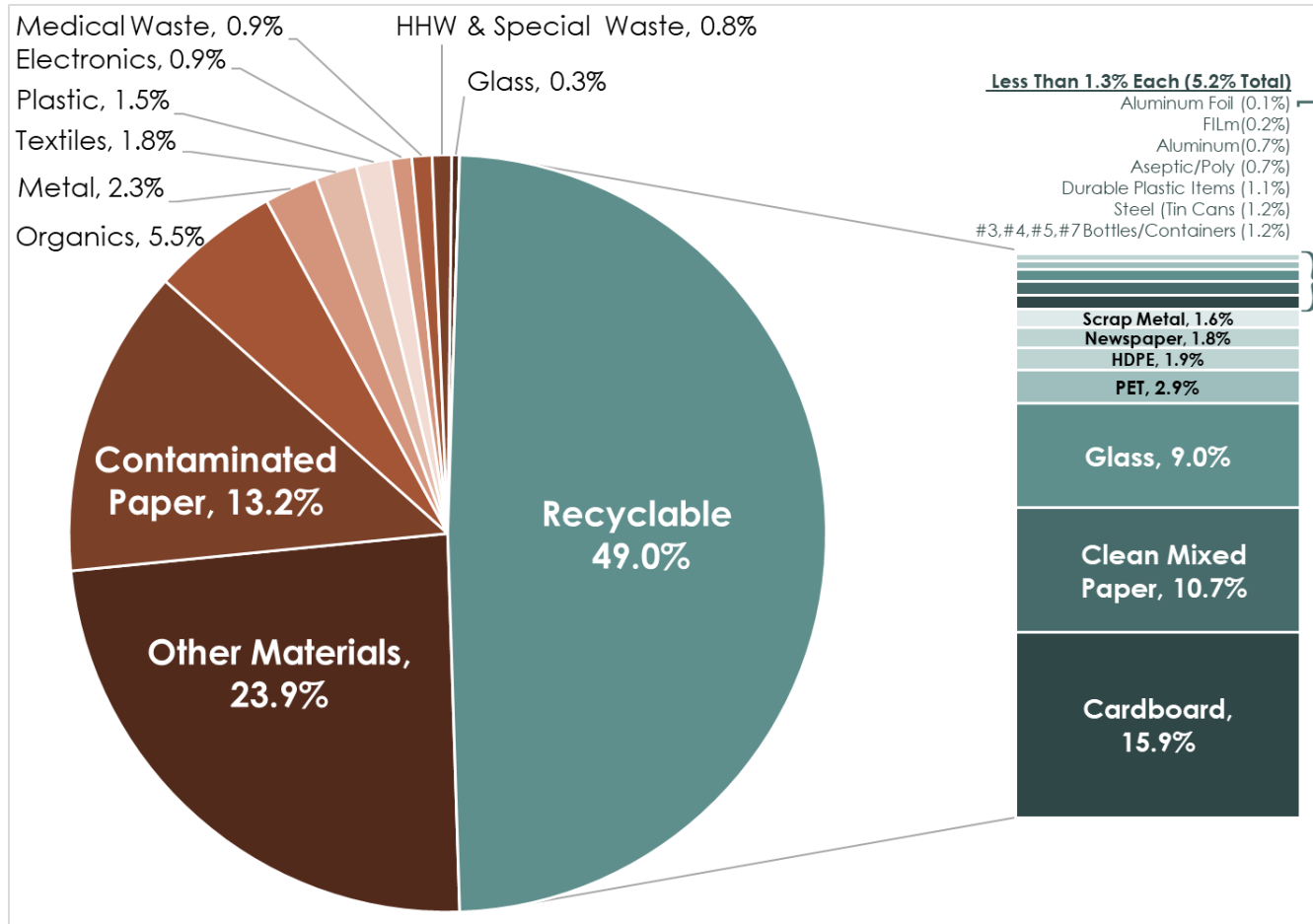
240 Routes Citywide

2,100 Tons/Week

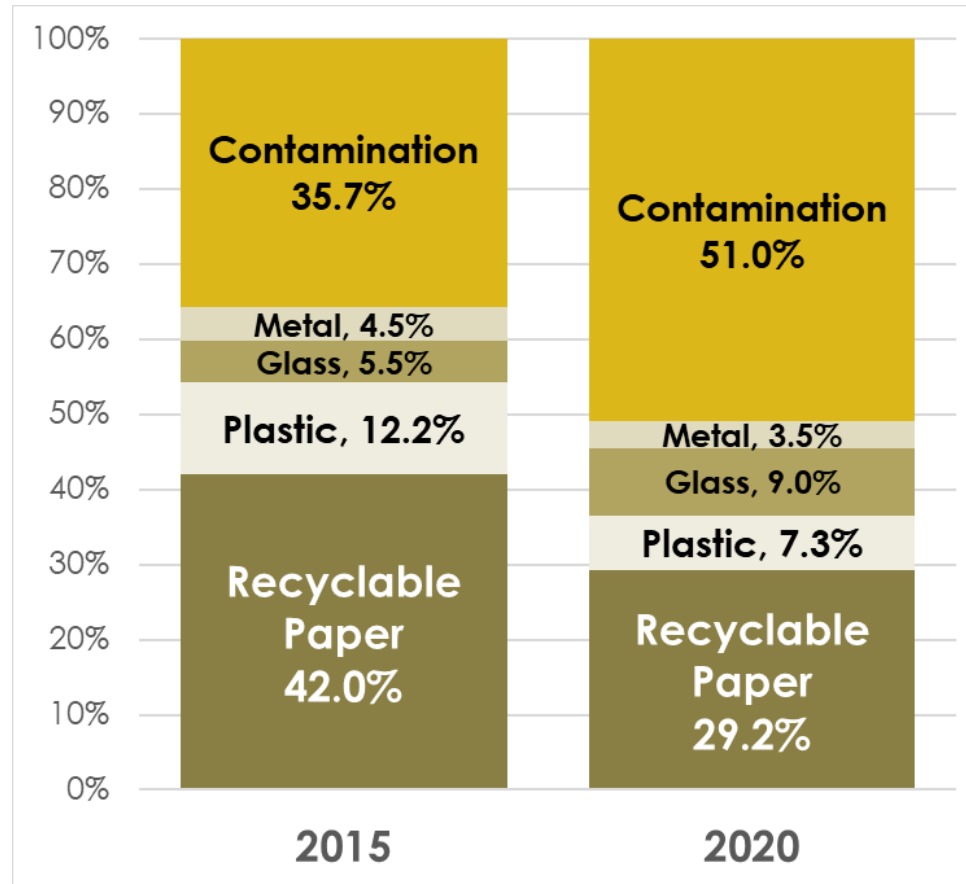
5-Week Sampling Period

Sample Every Route

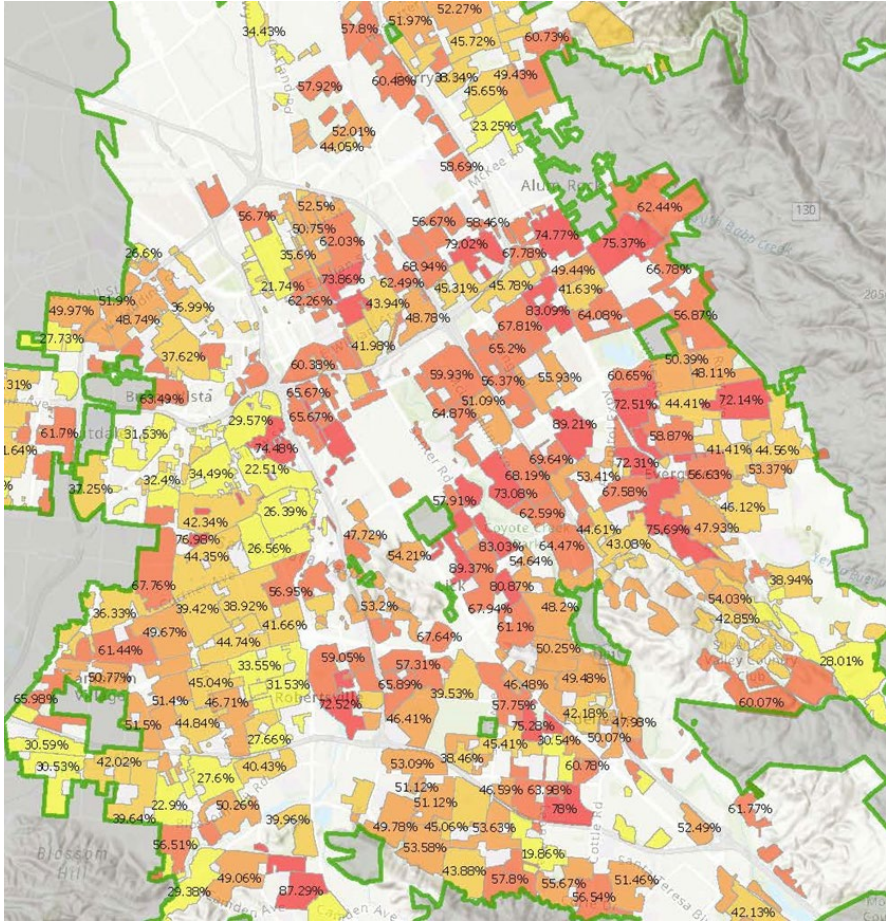
Bay Area City Study - Results



Bay Area City Study - Compare



Bay Area City Study – Spatial View



Monterey Study – Design

4,700 Tons per Month

6 Haulers, 13 Cities

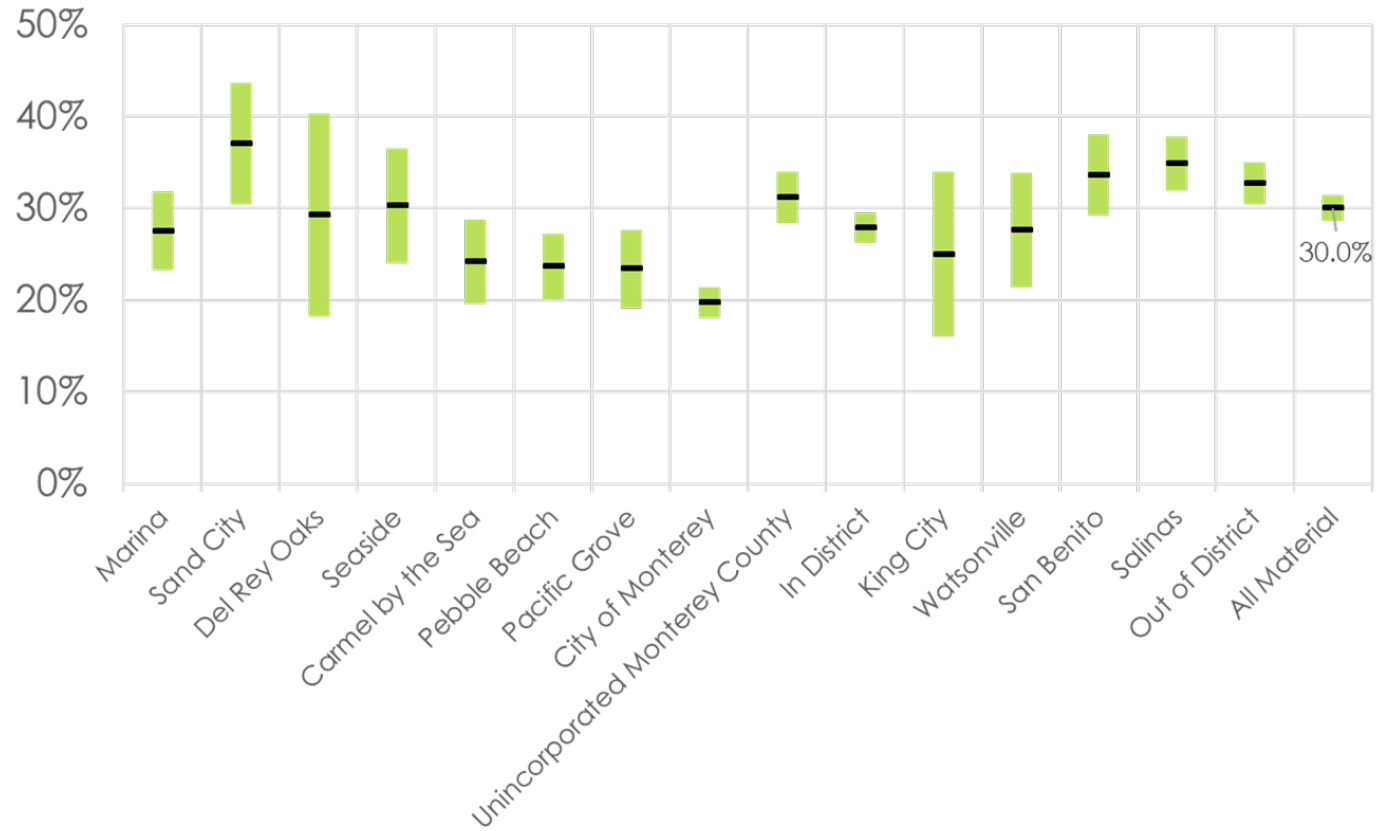
200 Samples over 4 Weeks

Predict Contamination

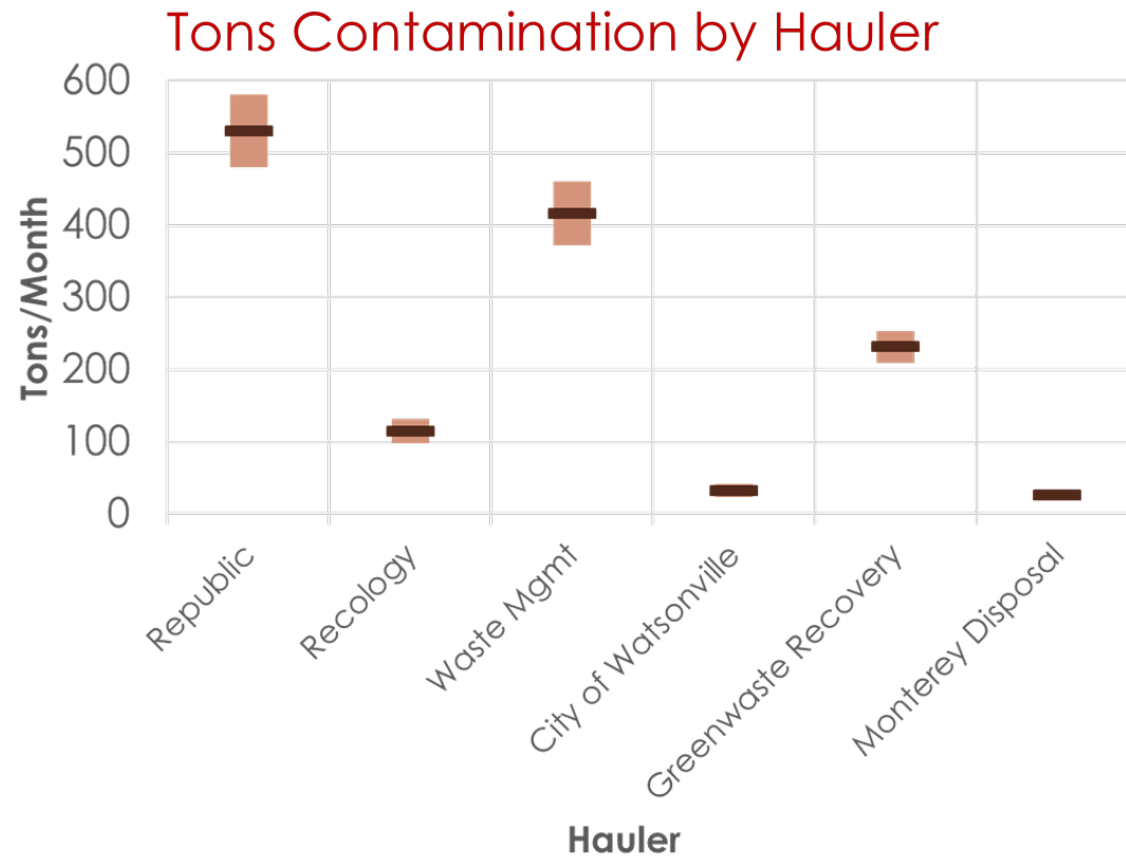
- +/- 1.5 Percent
- +/- 70 Tons/Month Overall

Monterey Study – Results

Percent Contamination by City

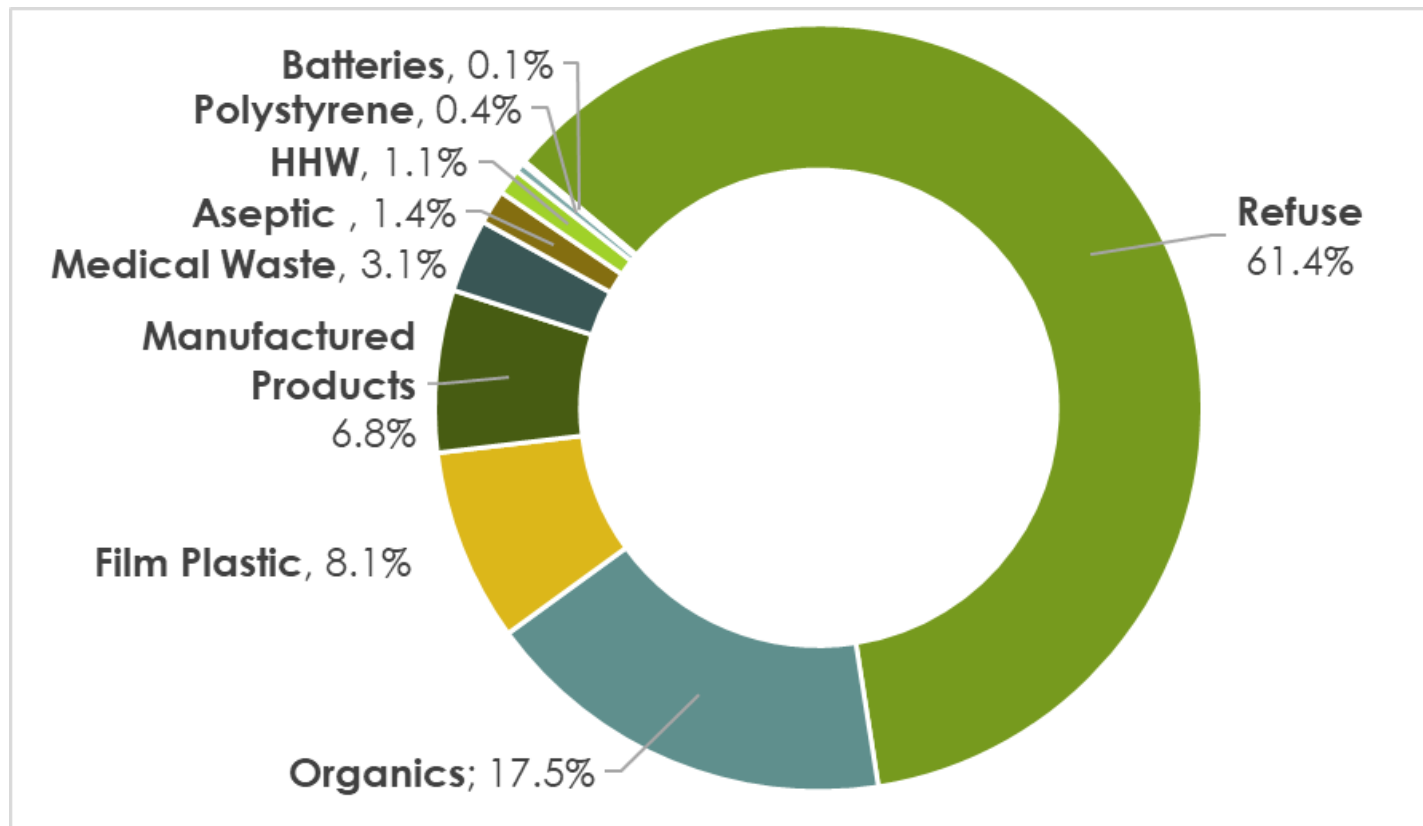


Monterey Study – Results

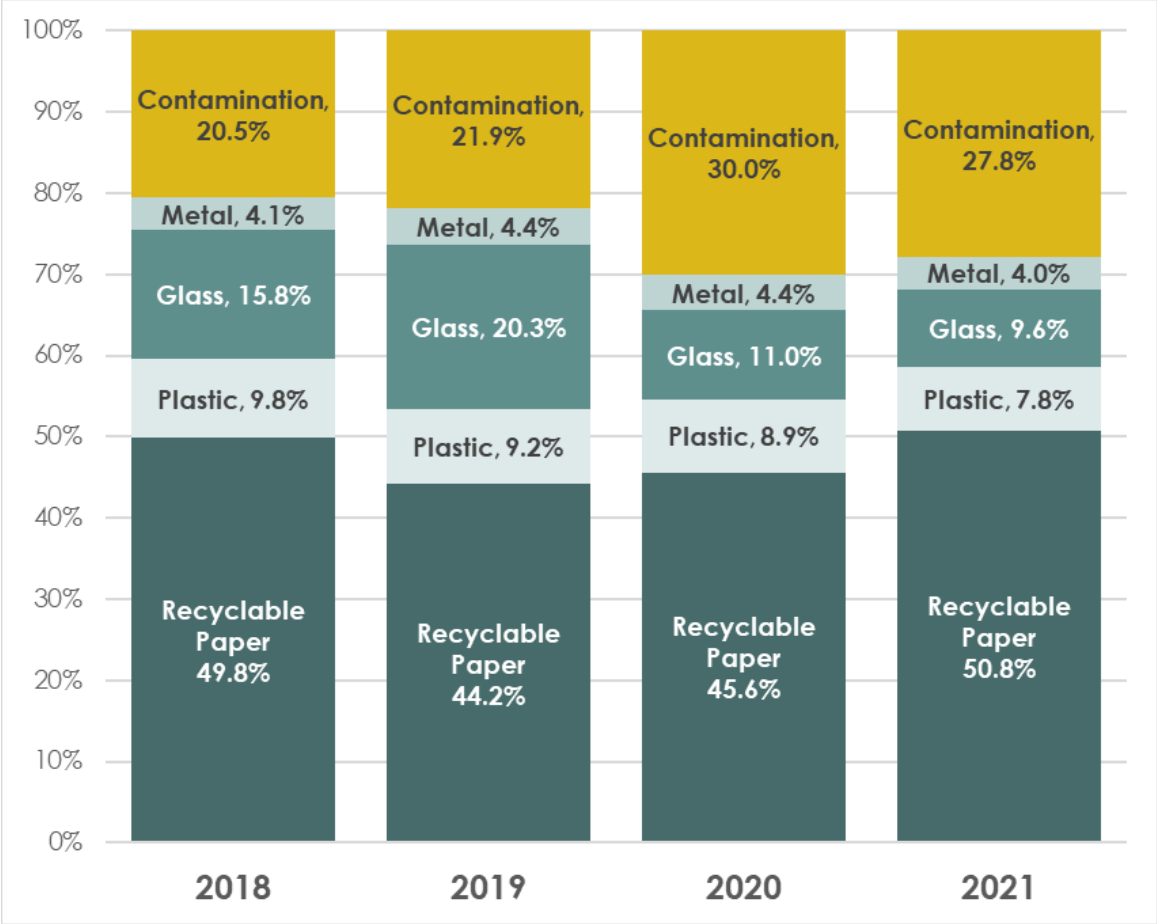


Monterey Study – Results

What is in Contamination

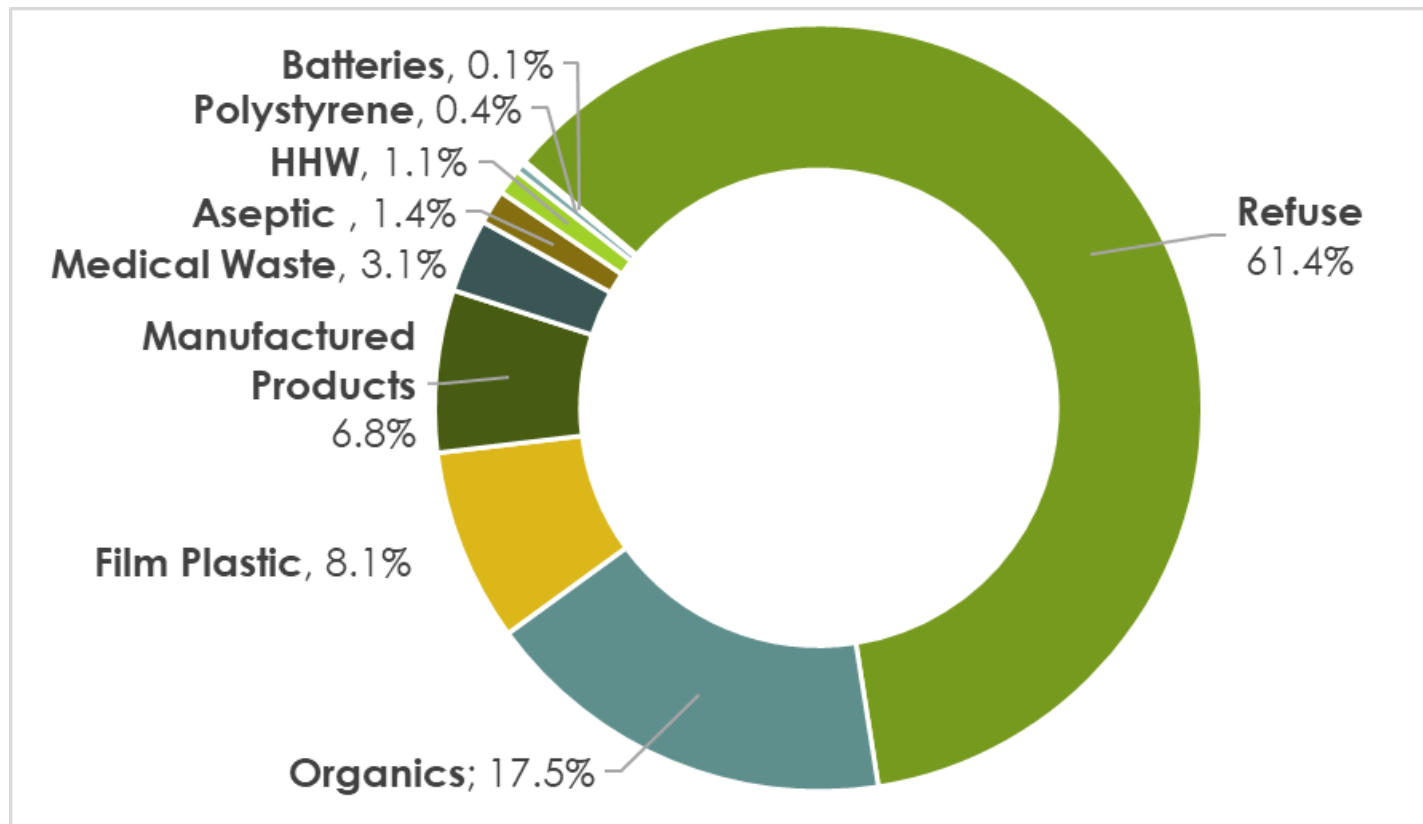


Monterey Study – Compare



Monterey Study – Closer Look

What is in Contamination



Monterey Study – Closer Look



Monterey Study – Closer Look



Monterey Study – Closer Look



Monterey Study – Closer Look



Monterey Study – Closer Look



Where Do We Go From Here?

Should Trash Capacity be Limited?



\$138/Mo

\$92/Mo

\$46/Mo

Other Considerations

- Focus Program on **Good Recyclers**
 - **Subscription**-Based Programs
 - **Discontinue** Service for Bad Recyclers
- Provide **Sufficient Disposal Capacity**
- **Educate** Frequently
- Periodic **Monitoring**
- **Enforcement**

THANK YOU

Michelle Leonard

mleonard@scsengineers.com

626-792-9593

